



1859 – 1930

An OLD BOOK by

ARTHUR CONAN DOYLE

COMIC CLASSICS SHERLOCK HOLMES AND THE HOUND of the BASKERVILLES



1984 – ????

with NEW DOODLES by

JACK NOEL

Farshore

BE A DETECTIVE

Crime Case Board

Help Sherlock Holmes create a 'Hound of the Baskervilles' crime case board.
Find a large piece of card or board. Copy and cut out the different characters and places at the end of the resources and gradually add them to the board as you read through the story. Add any information, clues or questions to it.



Be a Detective Investigation Sheet

Use the sheet (at the end of the resources) to write down any clues, questions, your deductions or answers that may come up in each chapter.

BE A DETECTIVE INVESTIGATION SHEET	
CHAPTER	INVESTIGATOR
Questions and clues	Deductions

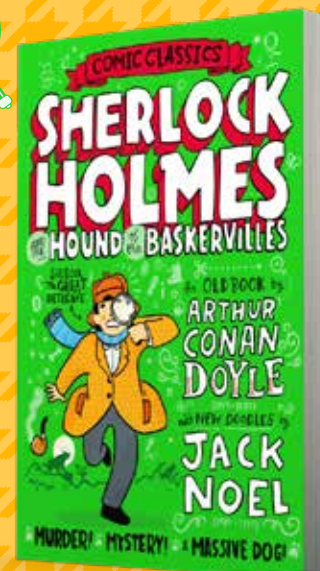
IT'S A MYSTERY!
SIR CHARLES
What happened to
Sir Charles?
Was he really killed by the
spooky hound of legend??



IT'S A MYSTERY!
THE MAN IN THE CAB
Barrymore is acting suspicious . . .
maybe he was the cabman after all?



Look out for the 'It's a mystery' boxes in the story. They can help you with deductions and clues. Add your answers to your investigation sheets.





1859 – 1930

An OLD BOOK by

ARTHUR CONAN DOYLE

SHERLOCK HOLMES

AND THE HOUND of the BASKERVILLES



1984 – ????

with NEW DOODLES by

JACK NOEL

Farshore

CHAPTER

1

ACTIVITIES

- Look at Watson's personal information form before Chapter One. Use the information from Chapter One to complete a form for Sherlock Holmes.
- In the manuscript, there is a warning that says: *I hereby command you to forbear from crossing the moor in those dark hours when the powers of EVIL are EXALTED.* Re-write this in modern language for a 21st century Baskerville to put on the wall. Use a dictionary to help you work out the meaning of some of the old words.
- The manuscript states that: *So many of the Baskervilles have suffered SUDDEN, BLOODY, and MYSTERIOUS deaths.* Create your own comic strip story about another Baskerville ancestor's untimely and mysterious death. Were they killed by a hound or something else?

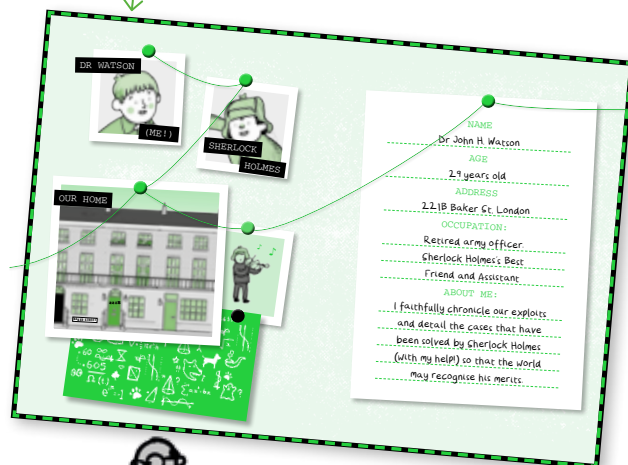
BE A DETECTIVE

Crime Case Board

Add Dr Mortimer, Sir Charles and Barrymore to the board

Be a Detective Investigation Sheet

Record the facts known about Sir Charles' death so far.

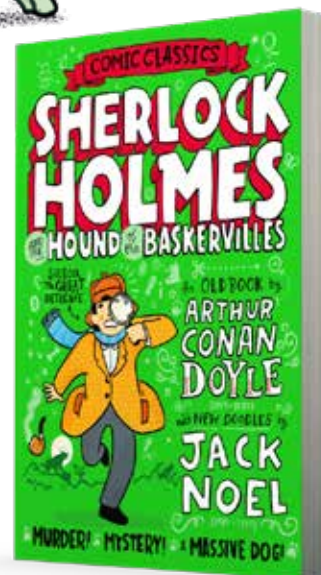


DISCUSSION POINTS

Well, Watson, what do you make of our visitor's stick?



- Using evidence in the chapter, describe Dr Mortimer and his personality.
- Dr Mortimer said, 'The moor is very sparsely inhabited, and those who live near each other are thrown very much together.' List the good and the bad things about living on and by the moor.
- When was the manuscript about the legend of 'The Hound of the Baskervilles' written? Do you think the legend is true or that something else killed Sir Hugo? What?
- Where did Sir Charles Baskerville often go for his nightly walk?
- What do you think killed Sir Charles – ill health, shock at seeing something terrible or being murdered?





1859 – 1930

An OLD BOOK by

ARTHUR CONAN DOYLE

COMIC CLASSICS SHERLOCK HOLMES AND THE HOUND OF THE BASKERVILLES



1984 – ????

with NEW DOODLES by

JACK NOEL

Farshore

CHAPTER

2

ACTIVITIES

- Create a labelled diagram of the scene of another Baskerville mystery or murder – it could be linked to the comic strip you created in Chapter One.
- In the past, the county of Devon was called Devonshire. Look at a UK map to find the county. Look closely to locate Dartmoor, where the story is set.

1. The 'A CASE OF EXTRAORDINARY INTEREST' diagram helped Sherlock record the facts and questions about the scene of the crime. What information do the other diagrams and maps in the chapter show about the case?
2. If Sir Henry sold Baskerville Hall and its lands, many local people who worked on the estate would lose their jobs. What kind of jobs do you think they did?
3. Imagine you are a friend of Sir Henry. Do you think he should keep away from Baskerville Hall or go there and risk the Baskerville curse? Give your reasons.
4. What is the name of the small hamlet where Dr Mortimer had his headquarters?
5. Why do you think playing the violin helped Sherlock think? What activity helps you concentrate when you have a problem to solve?

BE A DETECTIVE

Crime Case Board

Add Sir Henry.
Add in map of the area.

Be a Detective Investigation Sheet

(pages 28-31) Add in Sherlock's questions and the given answers about the case.

Look at the diagrams for ideas
– what do you think?

(Pages 40-42) Add in Sherlock's queries about the case – what do you think?

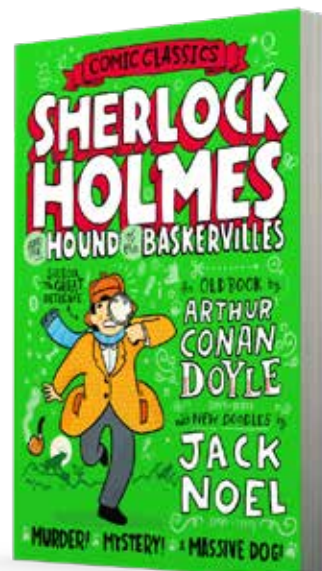
DISCUSSION POINTS



I HAVE BEEN TO
DEVONSHIRE!

In
spirit?

Exactly. After you
left I sent for the
map of this portion
of the moor, and my
spirit has hovered
over it all day.





1859 – 1930

An OLD BOOK by

ARTHUR CONAN DOYLE

SHERLOCK HOLMES

AND THE HOUND OF THE BASKERVILLES



1984 – ????

with NEW DOODLES by

JACK NOEL

Farshore

CHAPTER

3

ACTIVITIES

- The warning letter was created using different words from a newspaper. Cut out different word styles and sizes from magazines and newspapers to create an interesting book cover for *'The Hound of the Baskervilles by Arthur Conan Doyle'*.
- The warning letter address was written using an ink pen and ink. Try writing your own address using an ink pen and ink.
- Focus on the illustrations to find the different ways they show that the story is set in the past, e.g. transport, costume, house. Choose one of the items and draw it in more detail.

BE A DETECTIVE

Crime Case Board

Add the strange man in the cab to the board.

Be a Detective Investigation Sheet

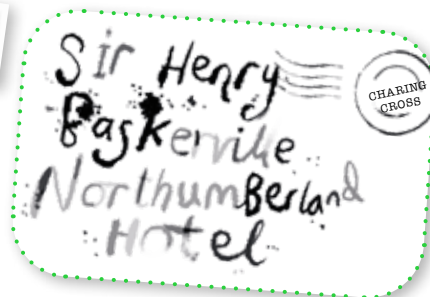
Look at the 'It's a mystery' information and add your deductions to the sheet.



or your

As you

keep away t



DISCUSSION POINTS

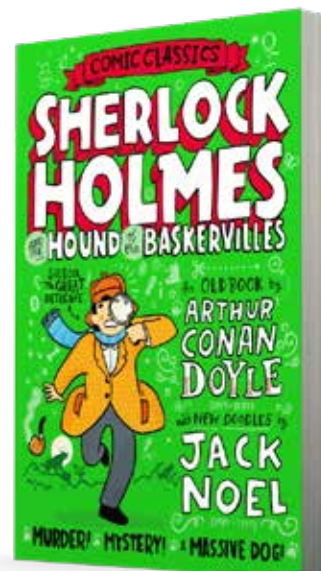
LOST



Brown boot (just one)
** Never worn! **

- Why do you think the warning letter is made from words cut out of a newspaper instead of written out in ink?
- Why would it have been difficult to find the word *moor* in a London newspaper?
- Why did Sherlock think that stealing one boot was a '*singularly useless*' thing to do?
- The lad, Cartwright, gazed at Sherlock with '*great reverence*'. What does this mean?
- What two pieces of information did Watson and Sherlock know about the hansom cab and its passenger?

e from the t





1859 – 1930

An OLD BOOK by

ARTHUR CONAN DOYLE

COMIC CLASSICS SHERLOCK HOLMES AND THE HOUND of the BASKERVILLES



1984 – ????

with NEW DOODLES by

JACK NOEL

Farshore



CHAPTER

4



ACTIVITIES

- In a telegram, there is a money charge for each word, so the message needs to be short. Write the telegram message to Barrymore. What could it say without causing him to become suspicious?
- Sir Charles left £750,000 in his will. £740,000 went to Sir Henry. £10,000 was left to charities, servants and friends. Use the information on page 68 to write a list of who got what. How much do you think the postman and the two charities got? Add one more charity and two more people to the list. Make sure it all adds up to £10,000.



DISCUSSION POINTS

- Why do you think Sherlock wanted Watson to be with Sir Henry in Devonshire?
- Why were Sir Henry and Dr Mortimer surprised to find an old boot under the bed?
- Why did the cab driver believe he had a good day?
- Why was the name *Mr Sherlock Holmes* written in a large black font on page 77?
- Why did Sherlock think that the Baskerville case was 'an ugly, dangerous business'?

MY MISSING BOOT!



Well, one of them (the new brown one)

BE A DETECTIVE

Crime Case Board

Add Mrs Barrymore to the board

Be a Detective Investigation Sheet

Look at the 'It's a mystery' information and add your deductions to the sheet.

List the three threads of investigation.

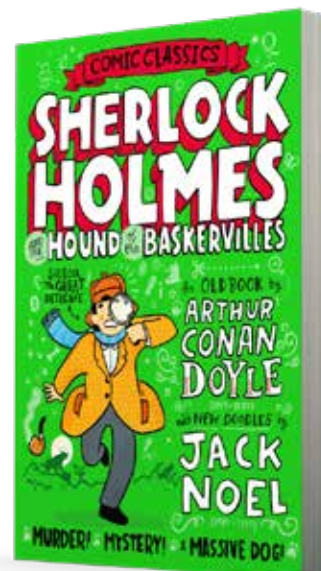
Why are they broken by the end of the chapter?

Do you think the man in the cab could be Barrymore?

What clues tell us the man has money and is not poor?

Could Sir Henry Baskerville's inherited fortune be dangerous for him too?

Who is he??





1859 – 1930

An OLD BOOK by

ARTHUR CONAN DOYLE

COMIC CLASSICS SHERLOCK HOLMES AND THE HOUND OF THE BASKERVILLES



1984 – ????

with NEW DOODLES by

JACK NOEL

Farshore



CHAPTER

5

ACTIVITIES

- Sir Henry wants a new bright stained-glass window with images from Canada – his old home. Design one for him.
- Read through the chapter to find out more information about Baskerville House. How would you improve the inside of the hall to make it more of a warm and inviting home? Write out your ideas with plans.

BE A DETECTIVE

Crime Case Board

Add Mr Stapleton, Beryl Stapleton, Mr Frankland and Selden to the board.

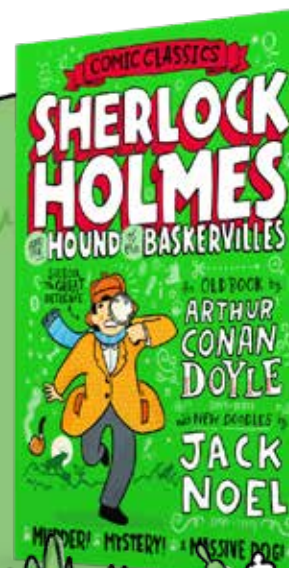
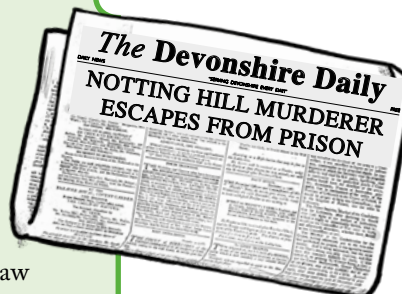
Be a Detective Investigation Sheet

Look at the 'It's a mystery' information and add your deductions to the sheet.

Might the convict Selden have something to do with Sir Charles' death?

DISCUSSION POINTS

1. Why did Sherlock warn Sir Henry to avoid the moors at night? What might happen if he went alone?
2. What are 'gnarled cairns and tors'?
3. What was so dangerous about Selden?
4. What was Sir Henry's reaction when he first saw Baskerville Hall?
5. How many words meaning 'sob' are used on page 99? Find and list some more words than mean 'sob' or 'cry'. Write them out in different font styles.





1859 – 1930

An OLD BOOK by

ARTHUR CONAN DOYLE

COMIC CLASSICS SHERLOCK HOLMES AND THE HOUND OF THE BASKERVILLES



1984 – ????

with NEW DOODLES by

JACK NOEL

Farshore

CHAPTER

6

ACTIVITIES

- Use the internet, books and the chapter to collect information about Dartmoor in Devon. Use the information to create a leaflet to encourage tourists to visit it. Add pictures and maps to make it look attractive.



- Mr Stapleton was a naturalist. Use page 107 to write a list of the equipment and clothing he used for his job. Make another list of what a modern-day naturalist would use.

BE A DETECTIVE

Crime Case Board

Add extra information about different characters and their behaviour.

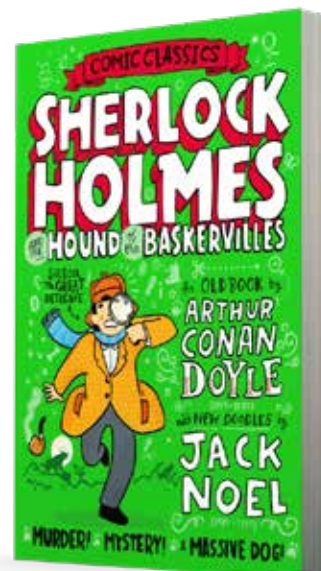
Be a Detective Investigation Sheet

Look at the 'It's a mystery' information and add your deductions to the sheet. Why did Miss Stapleton want Sir Henry to leave the area? Why did she change mood when her brother suddenly appeared? Why did they have to leave the school?



- Why do you think Mr Stapleton knew the moor so well?
- Stapleton warned Watson about Grimpen Mire: '*A false step yonder means death to man or beast*'. Why was it so dangerous?
- What two things did Watson and Stapleton think the howling noise could be? What do you think?
- Why was there a '*flush of vexation*' on Miss Stapleton's face?
- On page 117, how was the page and text designed to show the panic and urgency of Miss Stapleton's warnings?

DISCUSSION POINTS





1859 – 1930

An OLD BOOK by

ARTHUR CONAN DOYLE

SHERLOCK HOLMES

AND THE HOUND OF THE BASKERVILLES



1984 – ????

with NEW DOODLES by

JACK NOEL

Farshore



ACTIVITIES

CHAPTER 7

FIRST REPORT OF

DR WATSON

- Design a wanted poster for Selden the convict and murderer.
- Many of Dartmoor's tors have names linked to legends or their shapes such as 'Hound Tor'. Design and make a tor rock shape using your own choice of materials such as clay or soil and small rocks. What is its name? Think of a legend to go with it and share it with others.



BE A DETECTIVE

Crime Case Board

Add extra information about different characters and their behaviour. Add anything into the map.

Be a Detective

Investigation Sheet

Look at the 'It's a mystery' information and add your deductions to the sheet.

DISCUSSION POINTS

1. What features tell us that this chapter is written like a report and also a letter?
2. Why had it become harder for Watson to follow and accompany Sir Henry?
3. What did the rocks look like where Hugo Baskerville died? What would you call the rocks?
4. What secret business do you think Barrymore was up to?
5. In what two ways did Mr Frankland's actions help Watson and Sir Henry?



SELDEN

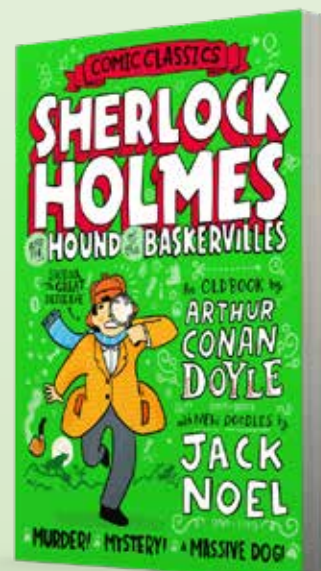
Escapee



A very naughty boy

This is where the Hound bit Hugo's throat!

Euw - gross!





1859 – 1930

An OLD BOOK by

ARTHUR CONAN DOYLE

COMIC CLASSICS SHERLOCK HOLMES AND THE HOUND OF THE BASKERVILLES



1984 – ????

with NEW DOODLES by

JACK NOEL

Farshore

ANOTHER LETTER FROM

WATSON

TO HOLMES

CHAPTER

8



ACTIVITIES

- Barrymore looked out of the window on to the moor on page 133. Create your own window view and add more labelled doodles, e.g. bogs or mires, rabbits, rock shapes.



- On pages 139–140, Sir Henry is upset that Miss Stapleton might not want to marry him. He has written to the relationship advice column in a local magazine for help. Write an answer with advice and tips on how to impress her.
- Mr Stapleton came round for tea to apologise to Sir Henry for his reaction about his sister. What little gift could he give Sir Henry to show he was sorry?



DISCUSSION
POINTS

- What or who do you think Barrymore was looking for?
- What made Watson decide to follow Sir Henry on to the moor?
- What was the '*wisp of green floating in the air*'?
- Do you think Miss Stapleton would have accepted Sir Henry's marriage proposal if Stapleton had not arrived?
- Sir Henry was still slightly wary about Stapleton even though he apologised. Why?



BE A DETECTIVE

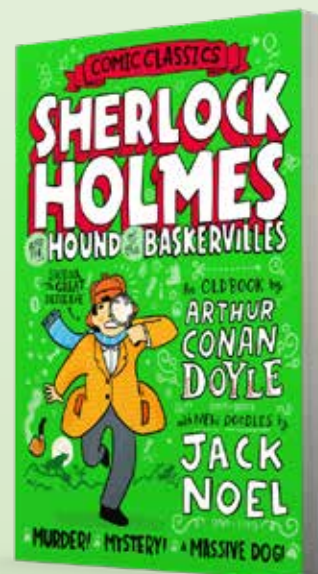
Crime Case Board

Add extra information about different characters and their behaviour.

Be a Detective Investigation Sheet

Why was Stapleton so possessive about his sister?

Could Stapleton be trusted?





1859 – 1930

An OLD BOOK by

ARTHUR CONAN DOYLE

SHERLOCK HOLMES

AND THE HOUND OF THE BASKERVILLES



1984 – ????

with NEW DOODLES by

JACK NOEL

Farshore



CHAPTER

9

ANOTHER LETTER

ACTIVITIES



- Barrymore and his brother-in-law, Selden, used light signals to communicate. Use the internet to find the Morse Code. With a partner, use torches to ask simple questions and responses using the Morse Code.
- Selden was at Princetown Prison, 14 miles away from Baskerville Hall. How do you think he escaped and got to the hall? Create a comic strip about his escape. Make it exciting.

BE A DETECTIVE

Crime Case Board

Add extra information about different characters and their behaviour.

Be a Detective Investigation Sheet

Look at the 'It's a mystery' information and add your deductions to the sheet. Could Selden have killed Sir Charles or pretended to be the hound?



??

A tiny light, out on the moor

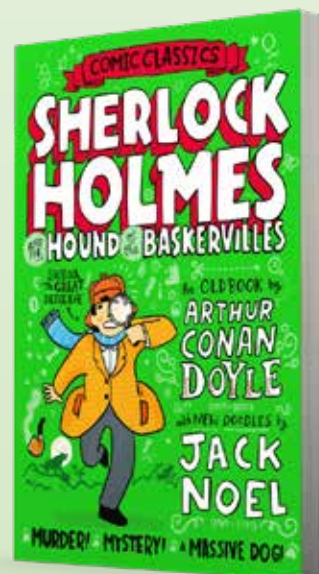
DISCUSSION POINTS

- Why would Barrymore not tell Sir Henry the truth despite being a faithful servant for many years?
- What were the light signals for?
- Why were the Barrymores allowed to keep their jobs?
- Why was Sir Henry worried about Selden being on the moors?
- What do you think Sherlock would say to Watson about Sir Henry's trip on to the moors at dark?

Here you go, bro



Thanks sis. Makes a nice change from prison porridge





1859 – 1930

An OLD BOOK by

ARTHUR CONAN DOYLE

SHERLOCK HOLMES

COMIC CLASSICS

AND THE HOUND OF THE BASKERVILLES



1984 – ????

with NEW DOODLES by

JACK NOEL

Farshore

HOOWL!

ACTIVITIES

CHAPTER

10

ANOTHER LETTER

- On page 153, there are examples of different howls. Get a long strip of paper and write out a long 'howl'. Try using different size letters, font styles and coloured pens.
- Watson saw a silhouette of a mysterious figure. Choose one of the book characters and draw their outline on black paper or colour with black pen. Can another reader recognise the character?
- Wealthy Victorians liked silhouette portraits. Draw a face silhouette of a friend or a family member. Stick paper to a wall and light it up with a lamp or torch. Ask your model to stand sideways to the paper to make shadow of their face. Draw round the shadow. Colour the outline with black paint or colouring pens.

BE A DETECTIVE

Crime Case Board

Add the hound to the board.
Add any extra information about different characters and their behaviour.

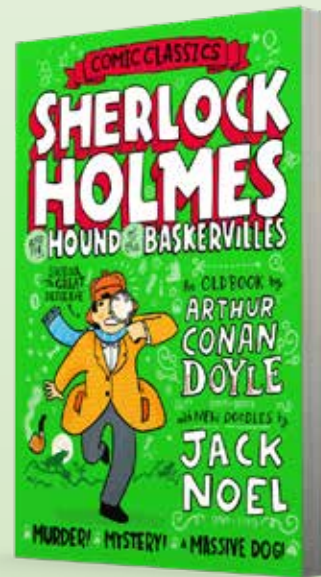
Be a Detective Investigation Sheet

Who could be the man on the tor?

DISCUSSION POINTS

- What words and phrases did Watson use to describe the howl on the moor? (page 153)
- How was Sir Henry feeling when he said, *'that sound seemed to freeze my very blood'*?
- How do we know from Selden's appearance that he had been living out on the moor?
- Why were Watson and Sir Henry suddenly able to see where Selden was running?
- Where do you think Selden went?

Who the heck?!?





1859 – 1930

An OLD BOOK by

ARTHUR CONAN DOYLE

SHERLOCK HOLMES

AND THE HOUND OF THE BASKERVILLES



1984 – ????

with NEW DOODLES by

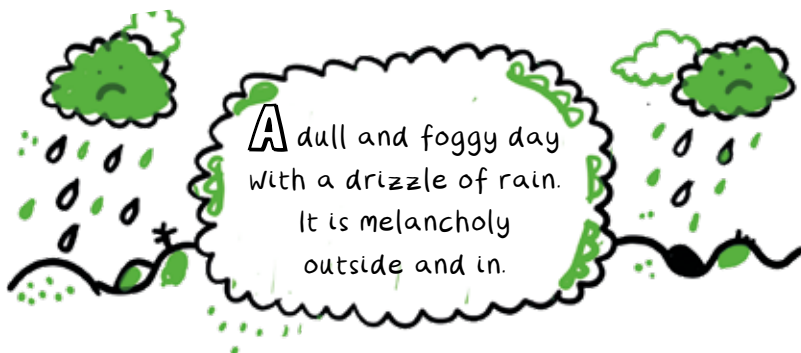
JACK NOEL

Farshore

CHAPTER 11

ACTIVITIES

- Write a shape poem about cold, wet weather on the moor. It could be in the shape of rain clouds, raindrops, or words within a moor landscape.



- Create an eye-catching business card for Laura Lyons or an advert for her typing business.
- Select a section of the diary and create three or four more doodles to add into it or have fun re-writing some phrases into large and different style fonts.

BE A DETECTIVE

Crime Case Board

Add the man on the tor and Laura Lyons to the board.

Be a Detective Investigation Sheet

Look at the 'It's a mystery' information and add your deductions to the sheet.

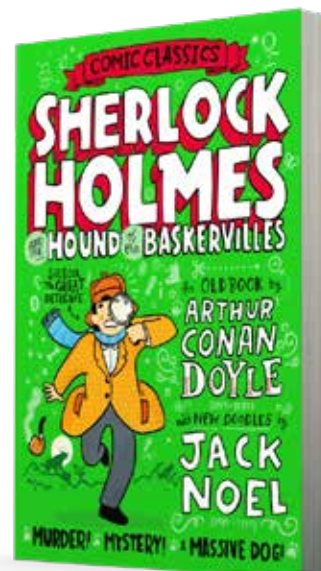
Add in the questions and your deductions from Watson's questions on page 163.

Who is the other man living on the moor apart from Selden?



DISCUSSION POINTS

- What events happened in chronological order during October 17th?
- What did Watson mean when he said: 'I am conscious myself of a feeling of ever present danger, which is the more terrible because I am unable to define it'?
- List the different ways the author uses fonts and letters sizes in the chapter. What effect is he trying to convey?
- How did Barrymore thank Watson and Sir Charles for their kindness?
- Why could finding L.L. solve the whole business about the death of Sir Charles?





1859 – 1930

An OLD BOOK by

ARTHUR CONAN DOYLE

COMIC CLASSICS SHERLOCK HOLMES AND THE HOUND OF THE BASKERVILLES



1984 – ????

with NEW DOODLES by

JACK NOEL

Farshore

CHAPTER

12

ACTIVITIES

- Mr Frankland said he had 'a red-letter day'. This is an old saying meaning a special or memorable day. What sayings or phrases do you know that describe a special day? Write about a red-letter day in your life and share it with others.
- On page 181, we can see the image of the boy in the telescope. Draw a telescope view of another part of the moor or part of Baskerville Hall. Use the illustrations in the book for inspiration.



BE A DETECTIVE

Crime Case Board

Add any new information about the characters.

Be a Detective Investigation Sheet

Look at the 'It's a mystery' information and add your deductions to the sheet.

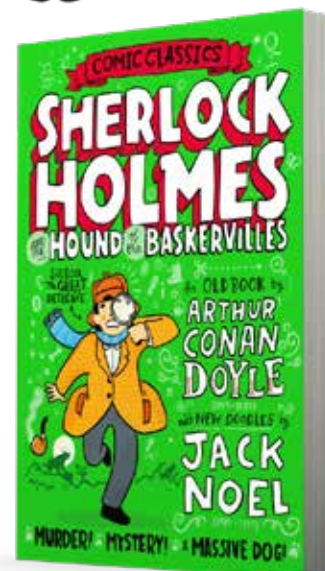
Why won't Laura Lyons say why she sent the letter?

Who is the boy on the moor?

DISCUSSION POINTS

- Why do you think Mrs Lyons did not go to Baskerville Hall?
- Why did Mr Frankland invite Watson into his home?
- Why was Watson keen to find out who the man on the tor was?
- Why did the boy not know he was being watched by Mr Frankland?
- Who do you think the boy could be? Look at his picture – does he look familiar? Where have you seen him before?

I owe a great deal to his kindness.





1859 – 1930

An OLD BOOK by

ARTHUR CONAN DOYLE

SHERLOCK HOLMES

AND THE HOUND OF THE BASKERVILLES



1984 – ????

with NEW DOODLES by

JACK NOEL

Farshore

CHAPTER

13

ACTIVITIES

- Make a list of the equipment and items in the burrow.
- Some stone burrows are believed to have been built by ancient Neolithic people. Use different sources to help you research stone burrows and the times and lives of Neolithic people.
- Design and make a model of a burrow using a variety of materials such as clay or stones.



BE A DETECTIVE

Crime Case Board

Add any new information about the characters.

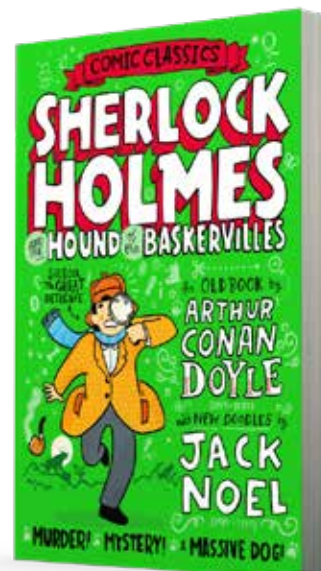
Be a Detective Investigation Sheet

Look at the 'It's a mystery' information and add your deductions to the sheet.

Who did you think the man was at the start of the chapter?
Who do you think it was at the end?
What is your evidence?

DISCUSSION POINTS

1. In what way did Watson feel he was like Stapleton when he was looking for butterflies?
2. On page 187, how did the author create a suspense with words and page design?
3. How do we know that a person had been in the burrow for a while?
4. What does the piece of paper say?
5. Do you think the person was Watson's enemy or guardian angel? Why?





1859 – 1930

An OLD BOOK by

ARTHUR CONAN DOYLE

SHERLOCK HOLMES

AND THE HOUND OF THE BASKERVILLES



1984 – ????

with NEW DOODLES by

JACK NOEL

Farshore

CHAPTER

14

ACTIVITIES

- Sherlock decided to make Watson one of his special 'burrow sandwiches' for both of them to eat. Design your own 'burrow' or 'Hound of the Baskervilles' sandwich. Write instructions on how to make it.
- Stapleton was the man in the cab in London. Make an itinerary of his day starting with his early train journey to London, finding somewhere to to put on his disguise, following Dr Mortimer, taking Sir Henry's boot, escaping Sherlock in the cab and returning on the train to Devon.



BE A DETECTIVE

Crime Case Board

Add any new information about the characters.

Be a Detective Investigation Sheet

Look at the 'It's a mystery' information and add your deductions to the sheet.

Why do you think Stapleton wants to murder Sir Henry and murdered Sir Charles?

Why could Laura Lyons be a powerful weapon for Sherlock to use against Stapleton?

DISCUSSION POINTS

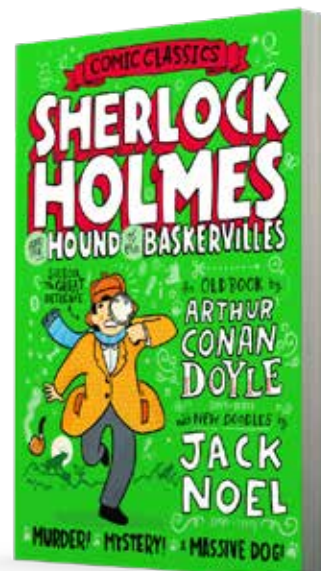
- From Watson's description, how do we know Sherlock had been hiding on the moor for quite some time?
- Why did Sherlock go into hiding and not tell Watson? Do you think he was right, or do you think Watson should have been told?
- How do you think Stapleton had deceived Laura Lyons?
- What do you think the terrible cry was?
- What does 'atrocious' mean? What 'atrocious' thing do you think Stapleton did?



MYSTERY SOLVED!

IT IS MURDER, WATSON –

refined, cold-blooded, deliberate murder.





1859 – 1930

An OLD BOOK by

ARTHUR CONAN DOYLE

SHERLOCK HOLMES

AND THE HOUND OF THE BASKERVILLES



1984 – ????

with NEW DOODLES by

JACK NOEL

Farshore



CHAPTER

15

ACTIVITIES

- Create a police report about the incident on the moors. Include time, place and witnesses. Add their statements into the report.
- Get some dark paper and use a white or yellow pen to write a vertical acrostic poem using the words 'Baskerville Hound'.
- Write some action sentences for that night on the moor. Try to have three action words in each sentence to make it exciting, e.g. Selden raced across the boggy land, tripped over an old boot and plunged over the edge of the steep rocks.

BE A DETECTIVE

Crime Case Board

Add any new information about the characters.

Be a Detective Investigation Sheet

Add your deductions to the sheet.

Why were the clothes and boot useful?

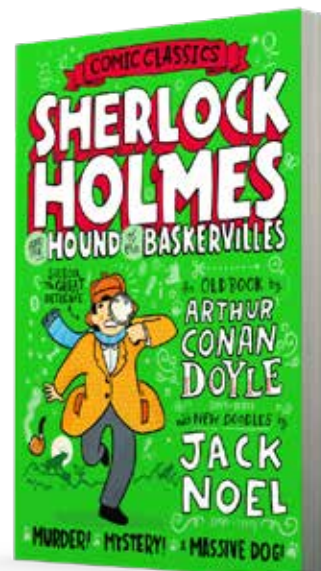
Who could have given the boot to the hound?

Why was Stapleton happy when he approached Sherlock and Watson?

Why was he unhappy when he heard about Selden?

DISCUSSION POINTS

1. What action verbs were used in the first paragraph on page 204?
2. Why did Sherlock originally think the dead man was Sir Charles?
3. Why was Sherlock so cross with himself when he thought Sir Charles had died?
4. How is the letter font used to show the emotion of Holmes at the top of page 208?
5. What do you think caused Selden to fall over the edge of the cliff?





1859 – 1930

An OLD BOOK by

ARTHUR CONAN DOYLE

COMIC CLASSICS SHERLOCK HOLMES AND THE HOUND of the BASKERVILLES



1984 – ????

with NEW DOODLES by

JACK NOEL

Farshore



CHAPTER

16

ACTIVITIES

- Sherlock claims that the first quality of a criminal investigator is to see through disguise. Draw a picture of a someone or cut out a picture from a magazine. Draw or cut out items that can be added to the face to create a disguise, e.g. different hair styles, glasses, beards, nose shapes, hats etc. How many different disguises can you make?
- Selden's sister is very upset by his death and has ordered a gravestone. Design and write the wording on the gravestone. As his death is a secret, change the letters round in his name. Write a short epitaph* under his name.



* Epitaph – a phrase or form of words written in memory of a person who has died, especially as an inscription on a tombstone.

BE A DETECTIVE

Crime Case Board

Add any new information about the characters.

Be a Detective Investigation Sheet

Look at the 'It's a mystery' information and add your deductions to the sheet.

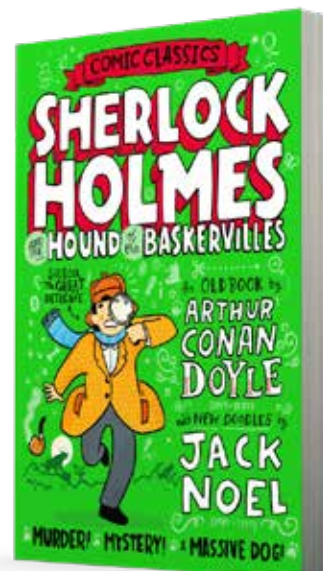
What kind of hound could it be?

What is the missing link?



DISCUSSION POINTS

- What does '*an unmitigated relief*' mean? Why did Barrymore feel that?
- What might Sherlock tell Laura Lyons about Stapleton that could help the case?
- What kind of evening might Sir Henry really had if he had gone to the Stapletons?
- What parts of Sir Hugo Baskerville's appearance looked like Stapleton?
- What was Stapleton's real name and who was his father?





1859 – 1930

An OLD BOOK by

ARTHUR CONAN DOYLE

COMIC CLASSICS SHERLOCK HOLMES AND THE HOUND of the BASKERVILLES



1984 – ????

with NEW DOODLES by

JACK NOEL

Farshore

CHAPTER

17

ACTIVITIES

- Draw a train poster to encourage people to travel on the train from a big city such as London or Manchester to Devon. Use the internet to study the old train posters. Note the style of lettering, the different pictures to entice visitors to Devon.



He's up early!



- Sherlock showed Laura Lyons a mix of '*convincing papers*' to show that Stapleton and Beryl were really married. One of these was a menu for a wedding reception feast. Decide what the menu contained and write it out in a formal and decorative way.

BE A DETECTIVE

Crime Case Board

Add any new information about the characters.

Be a Detective Investigation Sheet

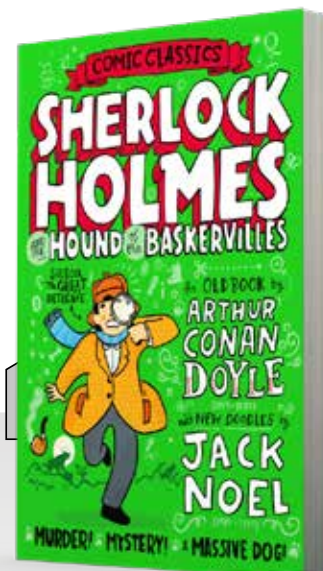
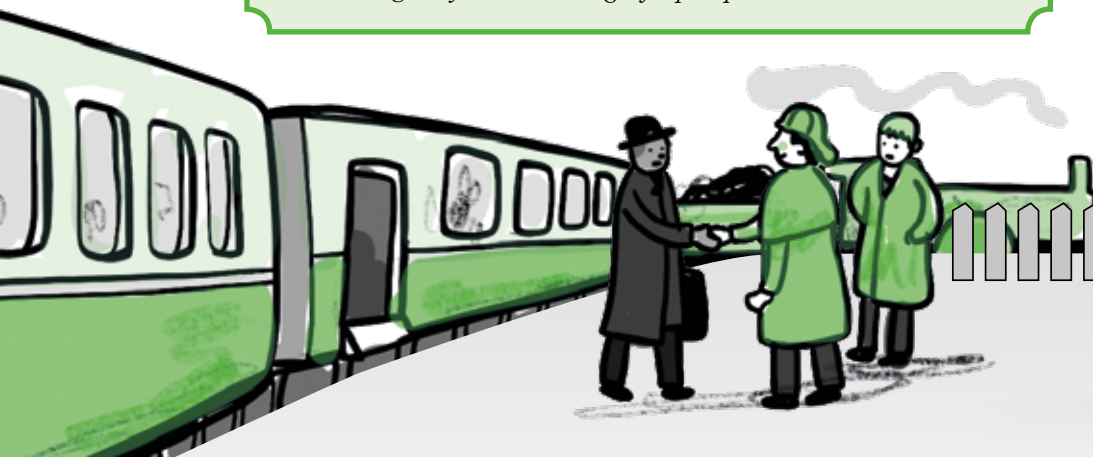
Add your deductions to the sheet.
What do you think Sherlock's plans could be?

Write out a list to help him.
How will this help capture the murderer?



- How did Laura Lyons physically react when she heard that Stapleton's sister was his wife?
- Who was on his way from London to help Sherlock Holmes?
- Why was Laura Lyons keen to help Holmes?
- What did Laura Lyons ask in the letter? Why did she not go? Why did she do what Stapleton told her?
- What did Sherlock mean when he said Laura Lyons had been walking '*very near to the edge of a precipice*'?

DISCUSSION POINTS





1859 – 1930

An OLD BOOK by

ARTHUR CONAN DOYLE

COMIC CLASSICS SHERLOCK HOLMES AND THE HOUND of the BASKERVILLES



1984 – ????

with NEW DOODLES by

JACK NOEL

Farshore

CHAPTER

18

ACTIVITIES

- Design and create your own legendary monster or beast poster. Write descriptive words and phrases around it in different fonts and letter sizes. Think of ways colour and visual effects can make it more terrifying.
- Make a list of words that mean the same as 'scream' such as 'shriek', 'yell' etc. Do another list of words that mean the opposite of 'scream' such as 'whisper'. Design a word picture in the shape of the hound using the words. Research the internet for word map artwork examples.

DISCUSSION POINTS

1. What was in Lestrade's hip pocket? Why had he got it?
2. What or who do you think was in Stapleton's outhouse? Why was he checking it?
3. How did Sherlock's mood change from excitement to fear?
4. How does the words and design of the page make you sense the horror and movement of the hound?
5. Which character saw the hound's mouth as shown on page 254-255?

BE A DETECTIVE

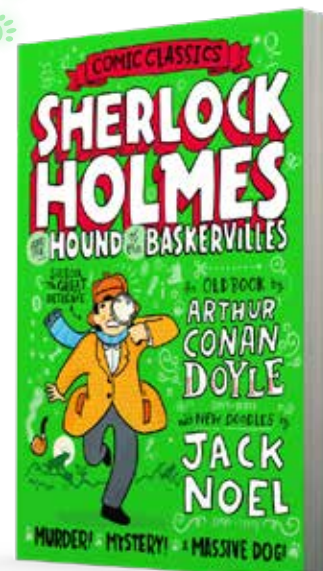
Crime Case Board

Add any new information about the characters.

Be a Detective Investigation Sheet

Add your deductions to the sheet.

Write a chronological report of the events of the evening from the point of view of Watson.





1859 – 1930

An OLD BOOK by

ARTHUR CONAN DOYLE

COMIC CLASSICS SHERLOCK HOLMES AND THE HOUND OF THE BASKERVILLES



1984 – ????

with NEW DOODLES by

JACK NOEL

Farshore

CHAPTER

19

ACTIVITIES

- Write down instructions for Stapleton on how to care for and train the huge hound.
- Create fact cards of creatures that really do glow in the dark such as glow worms, fireflies, types of jellyfish etc.
- Stapleton used the underground old tin mine as a place to hide. Draw and label plans of how he turned it into a place he could stay and live in, e.g. where he would sleep, where he would store and eat food etc.

BE A DETECTIVE

Crime Case Board

Add the old tin mine to the map.

Be a Detective Investigation Sheet

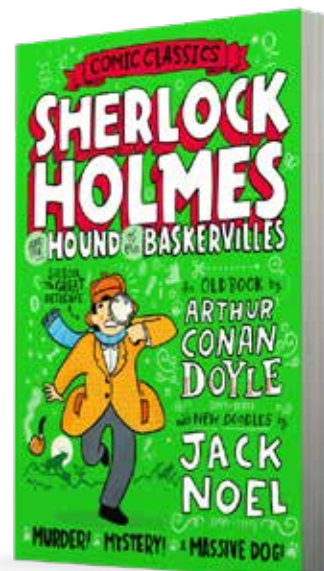
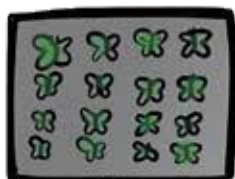
Add your deductions to the sheet.

Write a descriptive report of what the hound looked like.

Should Miss Stapleton be arrested or is she innocent?

DISCUSSION POINTS

1. What family ghost was finally laid to rest?
2. What is phosphorus? What did it make the hound look like?
3. Why do you think Stapleton tied up Beryl Stapleton?
4. Stapleton used the old tin mine as a refuge – what is a refuge?
5. Why was it best to wait until the fog had lifted before going to the old tin mine?





1859 – 1930

An OLD BOOK by

ARTHUR CONAN DOYLE

COMIC CLASSICS SHERLOCK HOLMES AND THE HOUND of the BASKERVILLES



1984 – ????

with NEW DOODLES by

JACK NOEL

Farshore

CHAPTER

20

ACTIVITIES

- Look at the illustration that shows how Sherlock was rescued from the mire. Invent equipment or a machine that could be used to help other people who are stuck in sinking mud.
- Sir Henry has decided to give Sherlock and Watson their own coat of arms as a gift for solving the crime. Design the two coats of arms. What would you add that would represent each of their skills and personality?
- The night of the attack has been reported in the local newspaper. Create an eye-catching newspaper front-page report about the events. Include comments made by one or more of the people involved. Remember the 5Ws and 1H (who, what, when, where, why and how).

BE A DETECTIVE

Crime Case Board

Look at the characters and the crime case board.

Was the murderer the person you suspected from the beginning or were there other suspects too?

Be a Detective Investigation Sheet

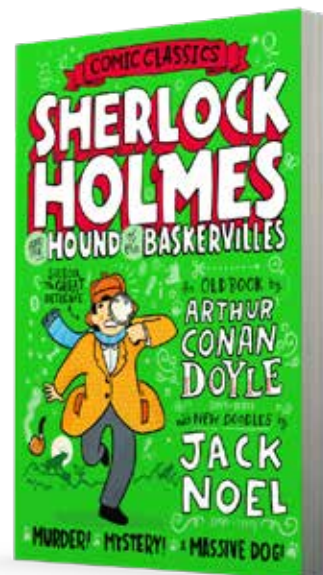
Write down short predictions of what you think happened to each of the characters after the story ended.

If you think Stapleton faked his death, what did he do next?

Do you think he will return to get his revenge?

DISCUSSION POINTS

1. Find different words that describe boggy land. Why would it be difficult to walk on it?
2. Find and write down the different phrases to describe the moor on pages 266-267.
3. What imagery did Watson use to describe sinking into the soft, boggy land?
4. Why would Sherlock have been in danger if Watson and Sir Henry hadn't been with him?
5. For what reasons did Sherlock believe that Stapleton didn't get to the old tin mine and that he was dead?





COMIC CLASSICS

SHERLOCK HOLMES

AND THE HOUND OF THE BASKERVILLES

with NEW DOODLES by
JACK NOEL

Map of Devonshire Moor.
It could be important.

That is Baskerville Hall in the middle.

GRIMPEN MIRE

GRIMPEN

PERTHORPE HUTS

MELBURY HOUSE

The Yew Alley must stretch along this line, with the moor upon the right of it.

BASKERVILLE HALL

YEW ALLEY

This small clump of buildings is the hamlet of Grimpen, where our friend Dr Mortimer has his headquarters.

Within a radius of five miles there are only a very few scattered dwellings.

Then fourteen miles along the great convict prison of Princetown.

Between and around these scattered points extends the desolate, lifeless moor.

PRINCETOWN PRISON

FIVE MILES

TEN MILES

PERNTHORPE WOODS

This, then, is the stage upon which tragedy has been played.

439



Dr Mortimer



Stapleton



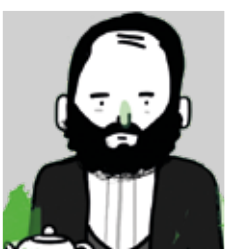
Miss Stapleton



Mr Frankland



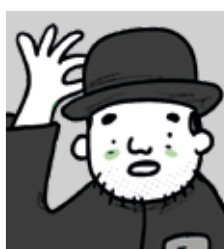
Laura Lyons



Barrymore



Mrs Barrymore



The cab driver



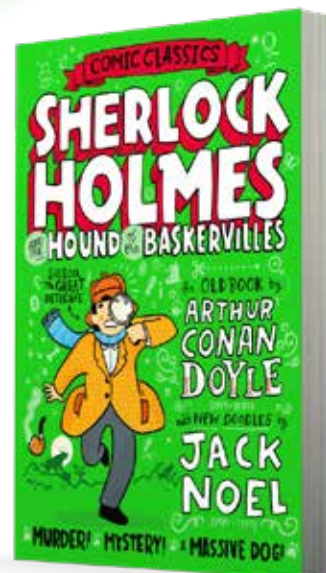
The man in the cab

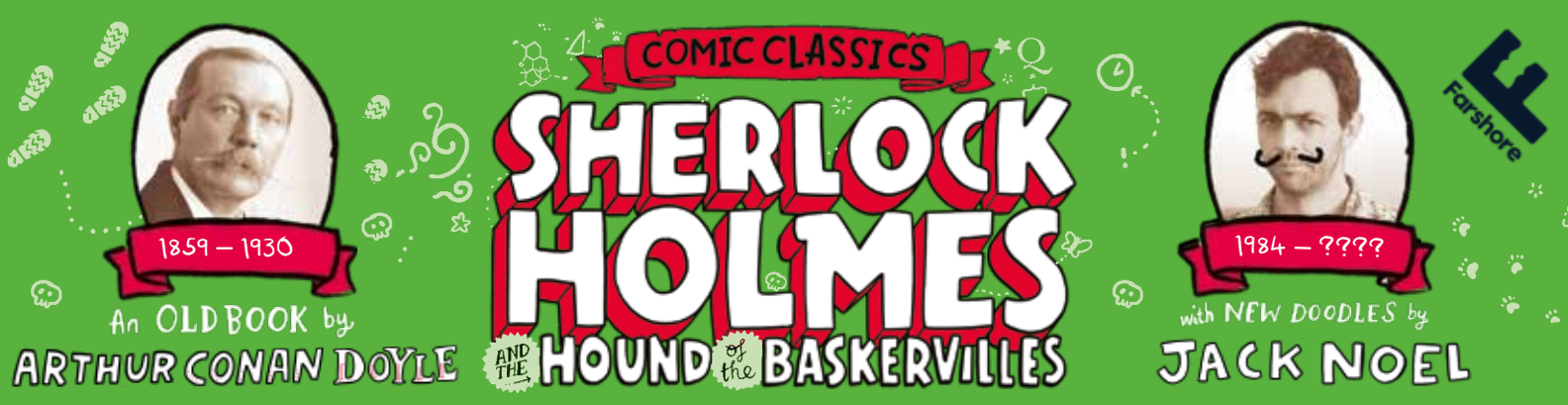


Selden



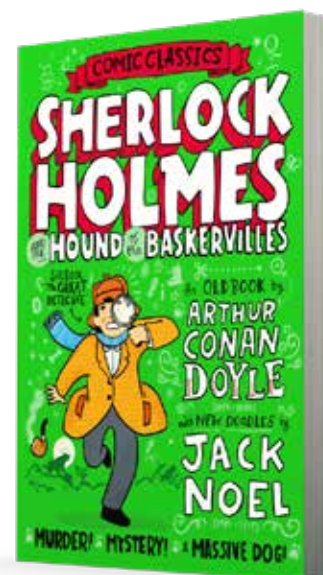
The hound





BE A DETECTIVE INVESTIGATION SHEET

CHAPTER	INVESTIGATOR
Questions and clues	Deductions





BOOK REVIEW

Title of Book:

Author: Illustrator:

Plot:

.....

.....

.....

.....

.....

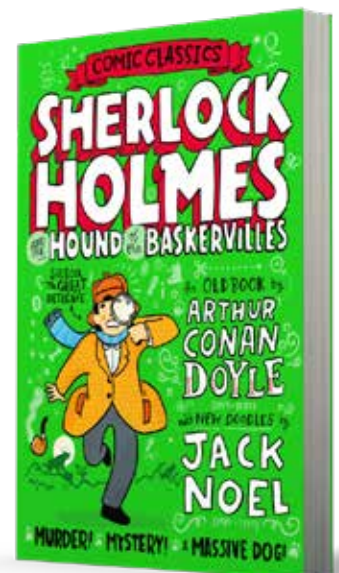
My favourite character

space to draw
↙

and why

.....

.....





BOOK REVIEW

← part two

My favourite doodle

space to draw
↙

and why

.....

.....

.....

.....

My favourite part in the story:

.....

.....

.....

.....

Words and phrases that I liked:

.....

.....

.....

.....

Reviewer's star rating:

colour them in
↙

